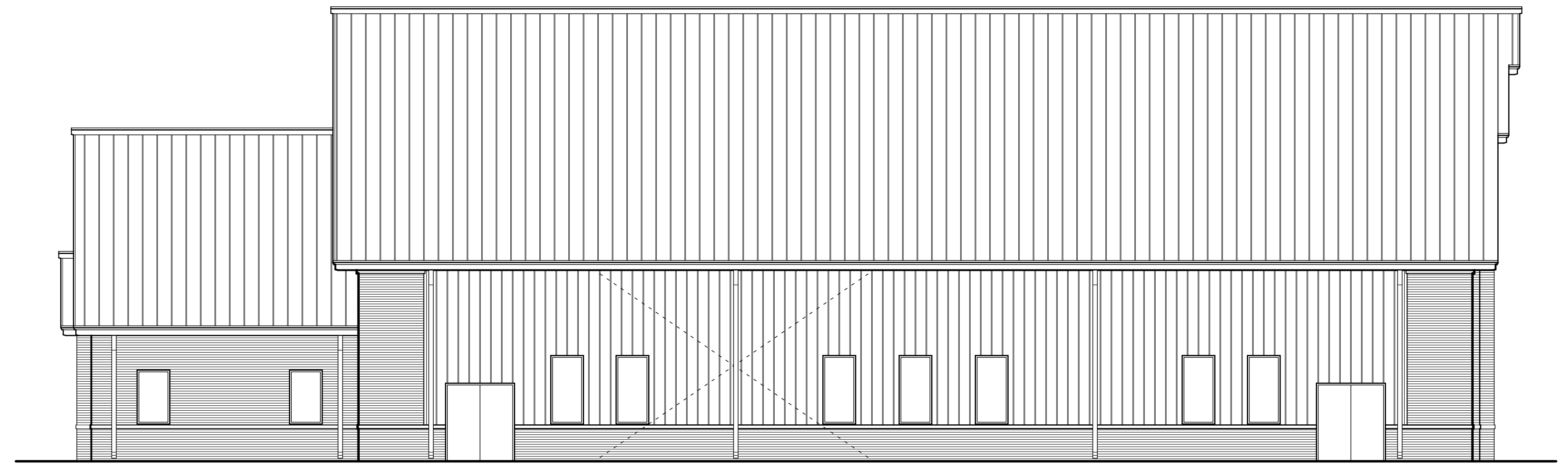


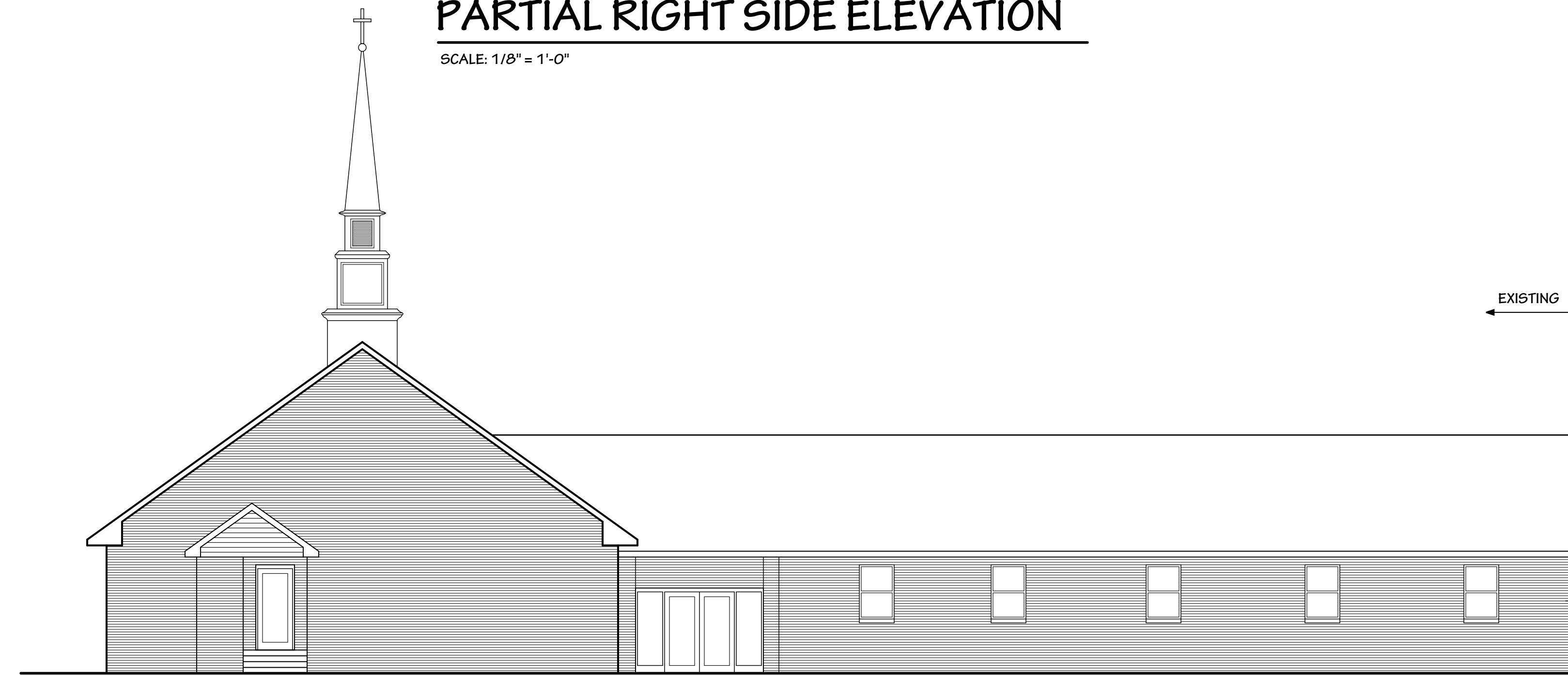
PARTIAL RIGHT SIDE ELEVATION

SCALE: 1/8" = 1'-0"



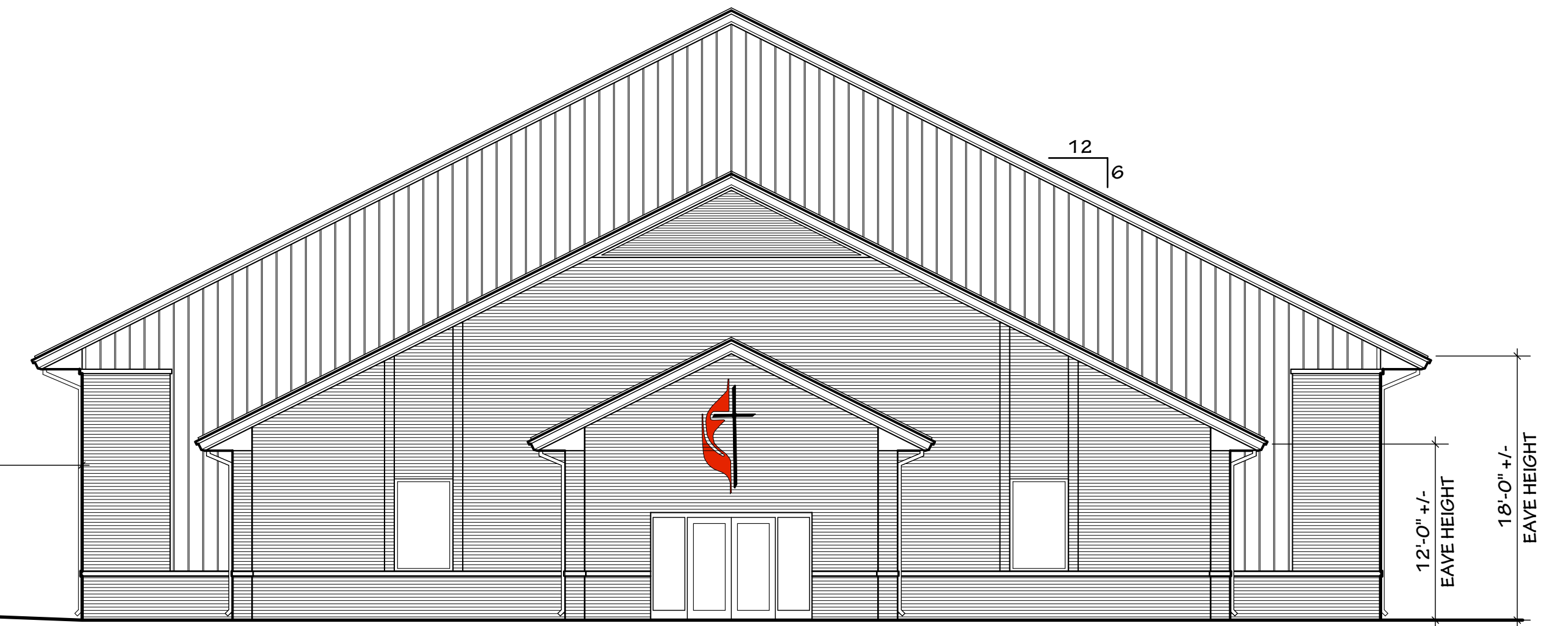
LEFT SIDE ELEVATION

SCALE: 1/8" = 1'-0"



EXISTING NEW

30'-0"

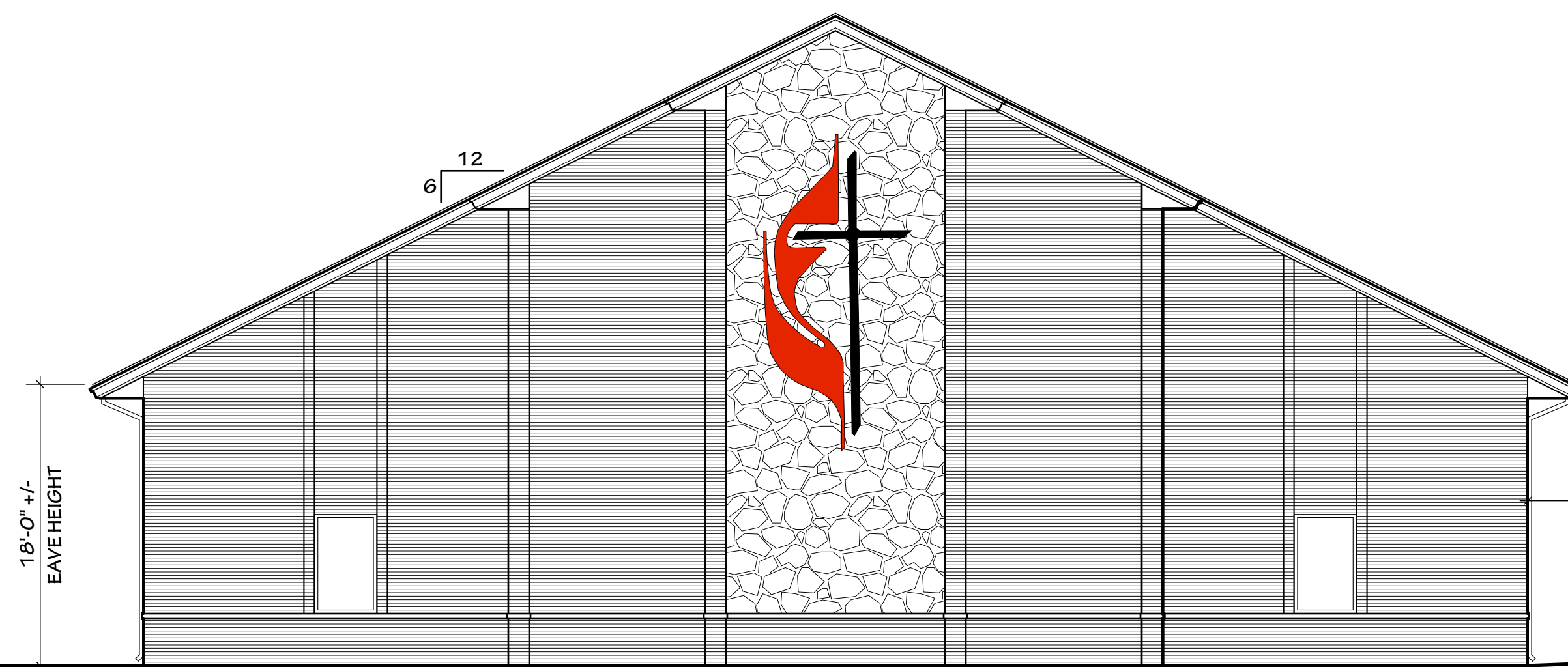


12
6

12'-0" +/-
EAVE HEIGHT
18'-0" +/-
EAVE HEIGHT

REAR ELEVATION - OPTION TWO

SCALE: 1/8" = 1'-0"

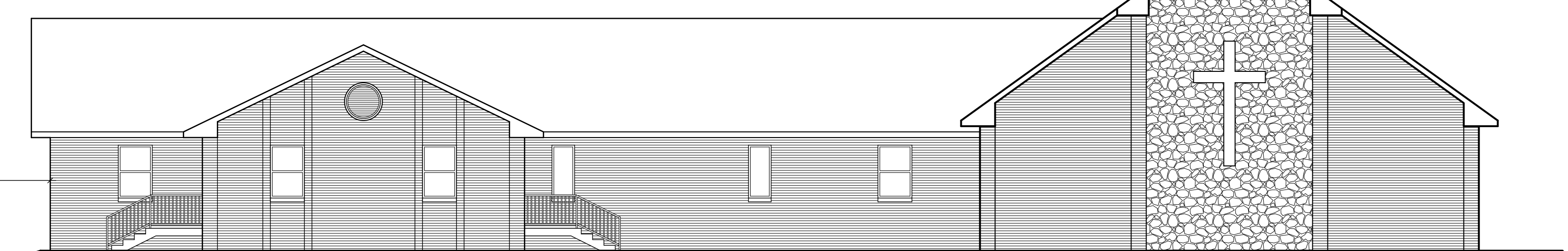


18'-0" +/-
EAVE HEIGHT

12
6

NEW EXISTING

30'-0"



FRONT ELEVATION - OPTION TWO

SCALE: 1/8" = 1'-0"